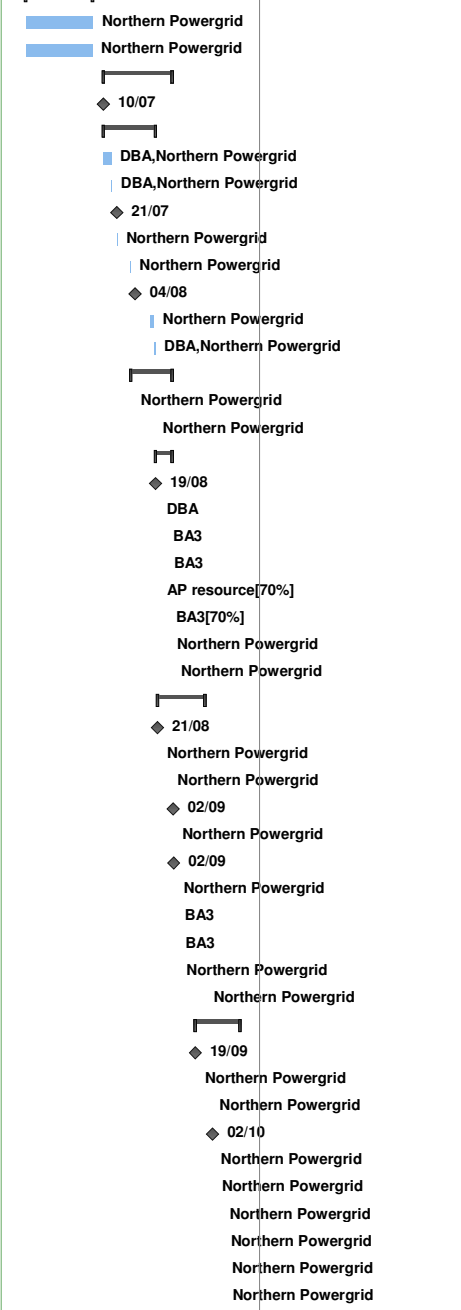


ID	Task Name	Start	Finish	November	December	11 August	September	October	01 May	June	July	August	September	October	November	December	21 January
				24/12	29/04	02/09	06/01	12/05	15/09	19/01							
233	Data cleansing	Mon 12/05/14	Wed 02/07/14														
234	Resolve HH exceptions	Mon 12/05/14	Wed 02/07/14														
235	Resolve NHH exceptions	Mon 12/05/14	Wed 02/07/14														
236	Mock migration	Thu 10/07/14	Mon 01/09/14														
237	NP start to receive D0036 files	Thu 10/07/14	Thu 10/07/14														
238	Build migration environments	Thu 10/07/14	Tue 19/08/14														
239	Create migration environment (Near-source, mig and near-live)	Thu 10/07/14	Wed 16/07/14														
240	Install 3.2 version of DURABILL	Wed 16/07/14	Thu 17/07/14														
241	NHHSC billing day	Mon 21/07/14	Mon 21/07/14														
242	Export/backup of NHHSC UoS data for mock and parallel run 1	Mon 21/07/14	Mon 21/07/14														
243	Export/backup of HH UoS data for mock	Thu 31/07/14	Thu 31/07/14														
244	HH billing day	Mon 04/08/14	Mon 04/08/14														
245	Apply 3.3 version of DURABILL	Fri 15/08/14	Mon 18/08/14														
246	Create test, training & parallel and training DURABILL schema	Mon 18/08/14	Tue 19/08/14														
247	Mock migration (at Northern Powergrid)	Thu 31/07/14	Mon 01/09/14														
248	Import data into near source schema	Thu 31/07/14	Fri 01/08/14														
249	Run MDD load	Mon 18/08/14	Mon 18/08/14														
250	Execute migration utilities	Tue 19/08/14	Mon 01/09/14														
251	Deploy migration utilities	Tue 19/08/14	Tue 19/08/14														
252	Run migration utilities	Tue 19/08/14	Thu 21/08/14														
253	Check results (database, forms and reports)	Thu 21/08/14	Tue 26/08/14														
254	Run exception and reconciliation reports	Tue 26/08/14	Tue 26/08/14														
255	HH recode	Tue 19/08/14	Thu 21/08/14														
256	Final check of migration results	Wed 27/08/14	Thu 28/08/14														
257	Data migration customer review	Thu 28/08/14	Fri 29/08/14														
258	Data pump to migration acceptance test	Fri 29/08/14	Mon 01/09/14														
259	Data migration parallel run 1	Thu 21/08/14	Fri 26/09/14														
260	NHHSC billing day	Thu 21/08/14	Thu 21/08/14														
261	Export/backup of NHHSC UoS data for parallel run 2	Thu 21/08/14	Thu 21/08/14														
262	Export/backup of HH UoS data for parallel run 1	Fri 29/08/14	Fri 29/08/14														
263	HH billing day	Tue 02/09/14	Tue 02/09/14														
264	Refresh migration environment from source	Mon 01/09/14	Tue 02/09/14														
265	Re-deploy migration utilities	Tue 02/09/14	Tue 02/09/14														
266	Run migration utilities	Tue 02/09/14	Wed 03/09/14														
267	Check results (database, forms and reports)	Wed 03/09/14	Thu 04/09/14														
268	Run exception and reconciliation reports	Thu 04/09/14	Thu 04/09/14														
269	Data pump to test schema	Thu 04/09/14	Fri 05/09/14														
270	DURABILL parallel run 1	Mon 08/09/14	Fri 26/09/14														
271	Data migration parallel run 2	Fri 19/09/14	Wed 22/10/14														
272	NHHSC billing day	Fri 19/09/14	Fri 19/09/14														
273	Export/backup of NHHSC UoS data for parallel run 2.5	Fri 19/09/14	Fri 19/09/14														
274	Export/backup of HH UoS data for parallel run 2	Tue 30/09/14	Tue 30/09/14														
275	HH billing day	Thu 02/10/14	Thu 02/10/14														
276	Refresh migration environment from source	Tue 30/09/14	Wed 01/10/14														
277	Re-deploy migration utilities	Wed 01/10/14	Thu 02/10/14														
278	Run migration utilities	Thu 02/10/14	Wed 08/10/14														
279	Check results (database, forms and reports)	Wed 08/10/14	Thu 09/10/14														
280	Run exception and reconciliation reports	Thu 09/10/14	Fri 10/10/14														
281	Data pump to test and parallel schemas	Fri 10/10/14	Fri 10/10/14														



ID	Task Name	Start	Finish	November				11 August		01 May		21 January	
				24/12	29/04	02/09	06/01	12/05	15/09	19/01			
282	DURABILL parallel run 2	Mon 13/10/14	Wed 22/10/14										
283	DURABILL parallel run 2.5 (NHHSC only)	Tue 21/10/14	Wed 22/10/14										
284	Live data migration	Wed 22/10/14	Thu 06/11/14										
285	GO/NO GO DECISION	Wed 22/10/14	Wed 22/10/14										
286	Implementation	Thu 23/10/14	Wed 29/10/14										
287	Build final DURABILL 3.3.0 release	Thu 23/10/14	Fri 24/10/14										
288	Complete release documentation	Fri 24/10/14	Mon 27/10/14										
289	Install and test at SCS	Fri 24/10/14	Tue 28/10/14										
290	Install at NP	Tue 28/10/14	Wed 29/10/14										
291	Refresh migration environments	Wed 29/10/14	Fri 31/10/14										
292	Backup database	Wed 29/10/14	Thu 30/10/14										
293	Freeze system	Thu 30/10/14	Fri 31/10/14										
294	Export and import schemas	Fri 31/10/14	Fri 31/10/14										
295	Deploy migration utilities	Wed 29/10/14	Thu 30/10/14										
296	Run MDD Load	Thu 30/10/14	Thu 30/10/14										
297	Execute migration utilities	Thu 30/10/14	Tue 04/11/14										
298	Run migration utilities	Thu 30/10/14	Mon 03/11/14										
299	Run exception and reconciliation reports	Mon 03/11/14	Tue 04/11/14										
300	Data pump to LIVE	Tue 04/11/14	Wed 05/11/14										
301	Check results (database, forms and reports)	Wed 05/11/14	Thu 06/11/14										
302	SYSTEM ACCEPTANCE	Thu 06/11/14	Thu 06/11/14										

- Northern Powergrid
- | Northern Powergrid
- ▬
- ◆ 22/10
- ▬
- | DBA
- | DBA
- BA2,BA1
- | Northern Powergrid
- ▬
- | Northern Powergrid
- Northern Powergrid
- Northern Powergrid
- Northern Powergrid
- Northern Powergrid
- ▬
- Northern Powergrid
- Northern Powergrid
- | Northern Powergrid
- Northern Powergrid
- ◆ 06/11