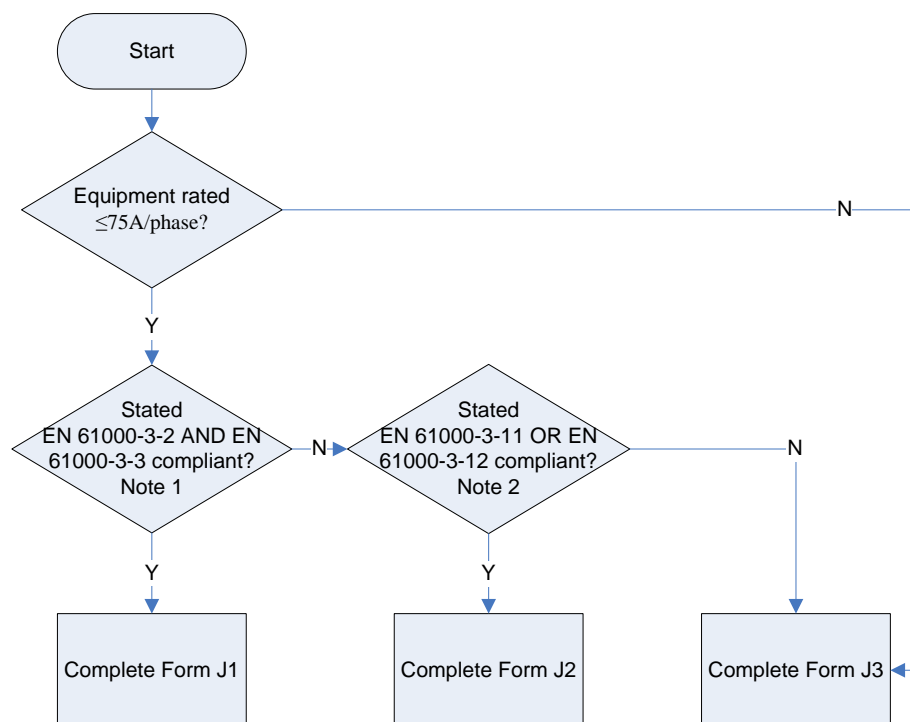


Flow Chart for Application to Connect a Heat Pump System

The appropriate Application Form depends upon the equipment rating and its compliance with relevant standards¹ that control specific types of power quality disturbance. See the flow chart below.



NOTE 1: This also includes cases where equipment rated >16A but ≤75A per phase complies with the technical requirements of these standards.

NOTE 2: In the case of a heat pump system complying with a voltage fluctuation/flicker standard (i.e. EN 61000-3-3 or EN 61000-3-11) but no harmonic standard (i.e. neither EN 61000-3-2 nor EN 61000-3-12) then complete Form C. This also applies for the converse of complying with a harmonic standard (i.e. EN 61000-3-2 or EN 61000-3-12) but no voltage fluctuation/flicker standard (i.e. neither EN 61000-3-3 nor EN 61000-3-11).

¹ BS EN 61000-3-2 'Limits for harmonic current emissions (equipment input current ≤16A per phase)', BS EN 61000-3-3 'Limitation of voltage changes, voltage fluctuations and flicker in public low-voltage supply systems, for equipment with rated current ≤ 16 A per phase and not subject to conditional connection', BS EN 61000-3-11 'Limitation of voltage changes, voltage fluctuations and flicker in public low-voltage supply systems – Equipment with rated current ≤ 75A and subject to conditional connection' & BS EN 61000-3-12 'Limits for harmonic currents produced by equipment connected to public low-voltage systems with input current >16A and ≤75A per phase'.