



DCUSA Request for Information

DCP168 - The Administration of Use of System charges relating to connections from Embedded Distribution Network Operator (EDNO) systems to Unmetered Supplies (UMS) for LA customers.

1 PURPOSE

- 1.1 A DCUSA Panel Working Group has been established to assess the impact of Change Proposal DCP 168 'The Administration of Use of System charges relating to connections from Embedded Distribution Network Operator (EDNO) systems to Unmetered Supplies (UMS) for LA customers'.
- 1.2 The Working Group requests additional information from DNO and EDNO Parties to further assess the impacts and feasibility of DCP 168.
- 1.3 This purpose of this document is to:
 - Request that DNOs provide data on the numbers of domestic unrestricted connections to EDNO networks within their Distribution Service Areas using the form provided as Appendix B; and
 - Request that DNOs make changes to their Price Control Disaggregation Model (also referred to as the Method M) and Common Distribution Charging Methodology (CDCM) Model 102 and use this data to assess the impact of using a single LDNO UMS discount to all tariffs calculated by the Model 102 and record the results in the template provided in Appendix A.
- 1.4 Parties are invited to provide their responses using the forms attached to dcusa@electralink.co.uk by **28 June 2013**.

2 INTENT OF DCP168

- 2.1 The intent of DCP168 is to make the required amendments to the DCUSA that will enable LA Authority (LA) customer's to trade their unmetered supply connections from licensed embedded networks under the host DNO's MPAN by creating a single EDNO discount factor for UMS connections regardless of the DNO/EDNO boundary network level. It is anticipated that changes will be required to the method of calculation of the EDNO discount percentages outlined in paragraphs 118 to 123 of Schedule 16. It may also be

necessary to make changes to the portfolio billing arrangements outlined in Schedules 19 and/or 21 of the DCUSA.

- 2.2 At this stage, it is not envisaged that any changes will be required elsewhere in the DCUSA to meet the intent of this change proposal, however this may change as the working group progresses.

3 REQUIRED INFORMATION TO ASSIST THE WORKING GROUP

- 3.1 To assist the working group to prepare an Industry consultation on the potential solutions available to implement DCP 168 the Working Group requires an impact assessment of the changes necessary to the PCDM and the CDCM Model 102. The step by step instructions for completing these changes are detailed below:

Changes Required to the PCDM Model

1. To assess the impact of DCP168 DNO's are requested to make a copy of the 2013 version of their PCDM and name it DCP 168 copy of PCDM.
2. Open the "Appendix B DCP168 RFI No2 LDNO Connections" spread sheet and populate the cells B7:H8 in the LDNO Connections worksheet with data relating to the total number of Domestic Unrestricted MPANS connected to Embedded LDNO Networks within the DNO Party's DSA split by DNO/EDNO boundary network level.
3. Select the LDNO Connections worksheet tab (i.e. right click on the worksheet tab) and move the LDNO Connections worksheet into the DCP168 copy of the PCDM spread sheet made in step 1 above using the "move or copy" function when right clicking on the worksheet tab.
4. In the "Appendix B DCP168 RFI No2 LDNO Connections" spread sheet select cells A1:B2 in the "UMS Discount Formula" worksheet.
5. Copy the selected cells and paste them into cell A24 of the "Splits and results" worksheet in the DCP168 copy of the PCDM spread sheet made in step 1.

6. Click into cell B25 of the “Splits and results” worksheet and insert an “=” at the start of the formula text “SUMPRODUCT('LDNO Connections'!B7:H7,'LDNO Connections'!B8:H8)/SUM('LDNO Connections'!B8:H8)”.
7. This action should activate the formula and calculate the required LDNO UMS discount percentage.

Changes Required to CDCM Model 102

1. To assess the impact of DCP 168 DNOs are requested to make a copy of the 2013 version of CDCM Model 102 and name it DCP 168 copy of Model 102.
2. Go to the Tariffs worksheet and select cells D15:I81, copy the cells and paste special (the values and number formats) into the cell D15 of the “Current Tariffs” worksheet in the Appendix A DCP168 RFI No2 Impact Assessment spread sheet.

Required Changes to Model 102, Input Worksheet, Data Table 1037 Embedded network (LDNO) discounts

1. To enable the impact assessment on DUOS Tariffs of DCP168 it will be necessary to create a new input in Model 102 to allow the new LDNO discount to be applied. This can be done as follows:
 - Select the Input worksheet and unprotect the sheet
 - Select cells F110:F111, copy their contents and paste into cell G110:G111
 - Rename G110 from “LDNO HV: HV user” to “LDNO UMS user”
 - Insert the value of the UMS LDNO discount percentage calculated in the DCP168 Price Control Disaggregation Model (PCDM) (step 3.1.7 above) into cell G111.

Required Changes to Model 102, Loads Worksheet, Data Table 2303 Discount map

1. To ensure the new LDNO UMS discount is applied to the forecast revenue calculations in Model 102 it will be necessary to update the data table 2303 which shows the applicable LDNO discounts that are applied to each of the tariffs. The existing table needs to be updated to add a column for the new LDNO UMS discount. It will also be necessary to change the discount map values for UMS LV LDNO tariffs and UMS HV LDNO tariffs to apply the new UMS discount. This can be done as follows:
 - Select the Loads worksheet and unprotect the sheet

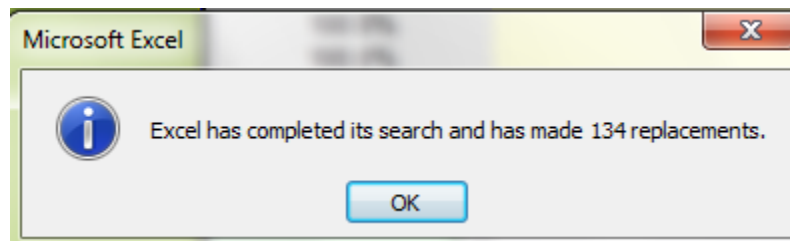
- Select cells F76:F171, copy their contents and paste into cell G76:G171
- Change the values of the cells in the data table 2303 Discount Map as per the table below:

Cell Reference	Current Value	New Value
G76	""	LDNO UMS user
G118	1	0
C123	1	0
D124	1	0
G123	0	1
G124	0	1
C127	1	0
D128	1	0
G127	0	1
G128	0	1
C131	1	0
D132	1	0
G131	0	1
G132	0	1
C135	1	0
D136	1	0
G135	0	1
G136	0	1
C139	1	0
D140	1	0
G139	0	1
G140	0	1

2. Now to change application of the discount to each of the tariffs the formulae in table 2304 (LDNO discounts and volumes adjusted for discount) need to be changed as follows:
3. Select cells B190:B284. Using the replace function in excel replace the letter F with the letter G throughout this cell array. This action will reveal 134 replacements as shown below.

DCP168 TC Version CDCM-Model_Pre-Release-Incorporating-DCP-130-and-DCP-132-South-Wales [Shared] [Compatibility Mode] - Microsoft Excel

	A	B	C	D	E	F
1	Load characteristics for WPD South Wales in 2013/14 (April 2013 Price Change)					
185	x11 = 1053. Reactive power units (MVarh) by tariff (in Volume forecasts for the charging year)					
186	Kind:	Sum-product calculation	Combine tables	Calculation	Calculation	Calculation
187	Formula:	=SUMPRODUCT(x1,	= x3 or x4	=x5*(1-x4)	=x6*(1-x4)	=x7*(1-x4)
188						
189		Discount for each tariff (except for fixed charges)	Discount for each tariff for fixed charges only			
190	> Domestic Unrestricted					
191	Domestic Unrestricted					
192	LDNO LV: Domestic Unrestricted	31.0%	31.0%			
193	LDNO HV: Domestic Unrestricted	61.9%	61.9%			
194	> Domestic Two Rate					
195	Domestic Two Rate					
196	LDNO LV: Domestic Two Rate	31.0%	31.0%			
197	LDNO HV: Domestic Two Rate	61.9%	61.9%			
198	> Domestic Off Peak (related MPAN)			1.270	1.426	
199	Domestic Off Peak (related MPAN)					
200	LDNO LV: Domestic Off Peak (related MPAN)	31.0%	31.0%	4,120.588		
201	LDNO HV: Domestic Off Peak (related MPAN)	61.9%	61.9%			
202	> Small Non Domestic Unrestricted					
203	Small Non Domestic Unrestricted			829,797.197		
204	LDNO LV: Small Non Domestic Unrestricted	31.0%	31.0%	8.280		
205	LDNO HV: Small Non Domestic Unrestricted	61.9%	61.9%	496.137		



4. This has the effect of changing the formulae in the model to include the new LDNO UMS discount for those applicable LDNO UMS tariffs.
5. Go to the Tariffs worksheet and select cells D15:I81, copy the cells and paste special (the values and number formats) into the cell D15 of the “Tariffs after DCP 168” worksheet in the Appendix A DCP 168 RFI No2 Impact Assessment spread sheet.

4 Next Steps

- 4.1 Upon receipt of the information requested in this RFI the Working Group will prepare a consultation for Industry Parties on the potential solutions to implement DCP 168.

5 Appendices

- Appendix A – DCP 168 RFI - Impact Assessment
- Appendix B – DCP 168 RFI - LDNO Connections